



ABOUT US

BRAND INFO

Rx Lab Consumables Manufacturer & Plastic Injection Specialist.

Digital Lens Processing

Our company is proud to develop from scratch RX consumables & spare parts for all optical labs that uses free form technology.

Free Form Polishing Tools

We offer a complete line of innovative high-quality free form polishing tools for digital surfacing all lens materials for all polishing machines in the market.

OEM Manufacturer

With our policy of exclusivity and confidentiality our company is the OEM (Original Equipment Manufacturer) of well recognized companies in the optical market.

Plastic Injection Molding Specialist

We are a professional injection molding product manufacturer and mold making service company for Optical industry.

Technical Lab Support

Our products are not sold alone. We do have a technical specialist team that support all doubts Labs may have when it comes to digital freeform lens production.

100% European Brand

Our production is all based on European raw materials and most of them are made exclusively in Portugal inside our factory. We proudly have 100% EU production.

Miguel Praça
KNETIK'S CEO







FREEFORM POLISHING TOOLS

SATISLOH Auto & I - Flex Machines

STANDARD AI-FLEX

INFO

→ Technical Data

Diameter: 47 mm | Work range base 0-14 dpt, cyl 0-4 dpt (max. 14 dpt in strongest meridian) | Polyurethane based polish carrier.

→ Benefits

High shape accuracy for all lens surfaces | Eliminates hard lap tools | Cost efficient | Reduces handling, because fewer tools are needed for large working range | Short polish times through high stock removal rates; process times nearly independent of cylinder and/or add powers | Highly versatile: polishes all lens formats (toric, spherical, free-form, convex & concave).

→ Recommendations

Please use with recommended polishing compound only.

→ Important Remark

Designed tools for Auto-Flex and i-Flex Satisloh polishing machines.

AVAILABLE CURVES

OEM DESIGN REFERENCES



CURVE 0 = 14-007-000/OEM
CURVE 1 = 14-007-001/OEM
CURVE 2 = 14-007-002/OEM
CURVE 3 = 14-007-003/OEM
CURVE 4 = 14-007-004/OEM
CURVE 5 = 14-007-005/OEM
CURVE 6 = 14-007-006/OEM
CURVE 7 = 14-007-007/OEM
CURVE 8 = 14-007-008/OEM
CURVE 9 = 14-007-009/OEM
CURVE 10 = 14-007-010/OEM
CURVE 11 = 14-007-011/OEM
CURVE 12 = 14-007-012/OEM
CURVE 13 = 14-007-013/OEM

ATD DESIGN REFERENCES



CURVE 0 = 14-007-000/ATD
CURVE 1 = 14-007-001/ATD
CURVE 2 = 14-007-002/ATD
CURVE 3 = 14-007-003/ATD
CURVE 4 = 14-007-004/ATD
CURVE 5 = 14-007-005/ATD
CURVE 6 = 14-007-006/ATD
CURVE 7 = 14-007-007/ATD
CURVE 8 = 14-007-008/ATD
CURVE 9 = 14-007-009/ATD
CURVE 10 = 14-007-010/ATD
CURVE 11 = 14-007-011/ATD
CURVE 12 = 14-007-012/ATD
CURVE 13 = 14-007-013/ATD

SATISLOH Auto & I - Flex Machines

PREMIUM ADVANCE AI-FLEX

INFO



Technical Data

Diameter: 47 mm | Work range base 0-14 dpt, cyl 0-4 dpt (max. 14 dpt in strongest meridian) | Polyurethane based polish carrier.



Benefits

High shape accuracy for all lens surfaces | Eliminates hard lap tools | Cost efficient | Reduces handling, because fewer tools are needed for large working range | Short polish times through high stock removal rates; process times nearly independent of cylinder and/or add powers | Highly versatile: polishes all lens formats (toric, spherical, free-form, convex & concave).



Recommendations

Please use with recommended polishing compound only.



Important Remark

Designed tools for Auto-Flex and i-Flex Satisloh polishing machines.

AVAILABLE CURVES

OEM DESIGN REFERENCES



CURVE 0 = 14-008-000/OEM
 CURVE 1 = 14-008-001/OEM
 CURVE 2 = 14-008-002/OEM
 CURVE 3 = 14-008-003/OEM
 CURVE 4 = 14-008-004/OEM
 CURVE 5 = 14-008-005/OEM
 CURVE 6 = 14-008-006/OEM
 CURVE 7 = 14-008-007/OEM
 CURVE 8 = 14-008-008/OEM
 CURVE 9 = 14-008-009/OEM
 CURVE 10 = 14-008-010/OEM
 CURVE 11 = 14-008-011/OEM
 CURVE 12 = 14-008-012/OEM
 CURVE 13 = 14-008-013/OEM

ATD DESIGN REFERENCES



CURVE 0 = 14-008-000/ATD
 CURVE 1 = 14-008-001/ATD
 CURVE 2 = 14-008-002/ATD
 CURVE 3 = 14-008-003/ATD
 CURVE 4 = 14-008-004/ATD
 CURVE 5 = 14-008-005/ATD
 CURVE 6 = 14-008-006/ATD
 CURVE 7 = 14-008-007/ATD
 CURVE 8 = 14-008-008/ATD
 CURVE 9 = 14-008-009/ATD
 CURVE 10 = 14-008-010/ATD
 CURVE 11 = 14-008-011/ATD
 CURVE 12 = 14-008-012/ATD
 CURVE 13 = 14-008-013/ATD

SATISLOH Auto & I - Flex Machines

SPEED AI-FLEX

INFO



Technical Data

Diameter: 47 mm | Work range base 0-14 dpt, cyl 0-4 dpt (max. 14 dpt in strongest meridian) | Polyurethane based polish carrier.



Benefits

Designed for maximum output per tool, production proven to last 9,000-12,000 seconds with optimum results | More accurate, improved mapping quality | Smoother peak to valley surface quality | Outstanding surface finish with unrivaled clarity | Extremely rigid and comparatively porous PU, it delivers superior flatness and excellent removal rates.



Recommendations

Please use with recommended polishing compound only.



Important Remark

Designed tools for Auto-Flex and i-Flex Satisloh polishing machines.

AVAILABLE CURVES

OEM DESIGN REFERENCES



CURVE 0 = 14-014-000/OEM
CURVE 1 = 14-014-001/OEM
CURVE 2 = 14-014-002/OEM
CURVE 3 = 14-014-003/OEM
CURVE 4 = 14-014-004/OEM
CURVE 5 = 14-014-005/OEM
CURVE 6 = 14-014-006/OEM
CURVE 7 = 14-014-007/OEM
CURVE 8 = 14-014-008/OEM
CURVE 9 = 14-014-009/OEM
CURVE 10 = 14-014-010/OEM
CURVE 11 = 14-014-011/OEM
CURVE 12 = 14-014-012/OEM
CURVE 13 = 14-014-013/OEM

ATD DESIGN REFERENCES



CURVE 0 = 14-014-000/ATD
CURVE 1 = 14-014-001/ATD
CURVE 2 = 14-014-002/ATD
CURVE 3 = 14-014-003/ATD
CURVE 4 = 14-014-004/ATD
CURVE 5 = 14-014-005/ATD
CURVE 6 = 14-014-006/ATD
CURVE 7 = 14-014-007/ATD
CURVE 8 = 14-014-008/ATD
CURVE 9 = 14-014-009/ATD
CURVE 10 = 14-014-010/ATD
CURVE 11 = 14-014-011/ATD
CURVE 12 = 14-014-012/ATD
CURVE 13 = 14-014-013/ATD

SATISLOH Duo & Toro - Flex Machines

STANDARD DT-FLEX

INFO



Technical Data

Diameter: 47 mm | Work range base 0-14 dpt, cyl 0-4 dpt (max. 14 dpt in strongest meridian) | Polyurethane based polish carrier | Innovation clip & place system that allows a longer life time of the plastic part due to its unique structure | Clip & place system is patented.



Benefits

High shape accuracy for all lens surfaces | Eliminates hard lap tools | Cost efficient | Reduces handling, because fewer tools are needed for large working range | Short polish times through high stock removal rates; process times nearly independent of cylinder and/or add powers | Highly versatile: polishes all lens formats (toric, spherical, free-form, convex & concave).



Recommendations

Please use with recommended polishing compound only.



Important Remark

Designed tools for Duo-Flex and Toro-Flex Satisloh polishing machines.

AVAILABLE CURVES

OEM DESIGN REFERENCES



CURVE 1 = 11-010-001/OEM
CURVE 3 = 11-010-003/OEM
CURVE 5 = 11-010-005/OEM
CURVE 7 = 11-010-007/OEM
CURVE 9 = 11-010-009/OEM
CURVE 11 = 11-010-011/OEM
CURVE 13 = 11-010-013/OEM

ATD DESIGN REFERENCES



CURVE 1 = 11-010-001/ATD
CURVE 3 = 11-010-003/ATD
CURVE 5 = 11-010-005/ATD
CURVE 7 = 11-010-007/ATD
CURVE 9 = 11-010-009/ATD
CURVE 11 = 11-010-011/ATD
CURVE 13 = 11-010-013/ATD

SATISLOH Duo & Toro - Flex Machines

PREMIUM DT-FLEX

INFO



Technical Data

Diameter: 47 mm | Work range base 0-14 dpt, cyl 0-4 dpt (max. 14 dpt in strongest meridian) | Polyurethane based polish carrier | Innovation clip & place system that allows a longer life time of the plastic part due to its unique structure | Clip & place system is patented.



Benefits

High shape accuracy for all lens surfaces | Eliminates hard lap tools | Cost efficient | Reduces handling, because fewer tools are needed for large working range | Short polish times through high stock removal rates; process times nearly independent of cylinder and/or add powers | Highly versatile: polishes all lens formats (toric, spherical, free-form, convex & concave).



Recommendations

Please use with recommended polishing compound only.



Important Remark

Designed tools for Duo-Flex and Toro-Flex Satisloh polishing machines | When switching from Standard tools to Premium tools adjustments of machine must be done.

AVAILABLE CURVES

OEM DESIGN REFERENCES



CURVE 1 = 11-011-001/OEM
CURVE 3 = 11-011-003/OEM
CURVE 5 = 11-011-005/OEM
CURVE 7 = 11-011-007/OEM
CURVE 9 = 11-011-009/OEM
CURVE 11 = 11-011-011/OEM
CURVE 13 = 11-011-013/OEM

ATD DESIGN REFERENCES



CURVE 1 = 11-011-001/ATD
CURVE 3 = 11-011-003/ATD
CURVE 5 = 11-011-005/ATD
CURVE 7 = 11-011-007/ATD
CURVE 9 = 11-011-009/ATD
CURVE 11 = 11-011-011/ATD
CURVE 13 = 11-011-013/ATD

SATISLOH Duo & Toro - Flex Machines

PREMIUM ADVANCE DT-FLEX

INFO



Technical Data

Diameter: 47 mm | Work range base 0-14 dpt, cyl 0-4 dpt (max. 14 dpt in strongest meridian) | Polyurethane based polish carrier | Innovation clip & place system that allows a longer life time of the plastic part due to its unique structure | Clip & place system is patented.



Benefits

High shape accuracy for all lens surfaces | Eliminates hard lap tools | Cost efficient | Reduces handling, because fewer tools are needed for large working range | Short polish times through high stock removal rates; process times nearly independent of cylinder and/or add powers | Highly versatile: polishes all lens formats (toric, spherical, free-form, convex & concave).



Recommendations

Please use with recommended polishing compound only.



Important Remark

Designed tools for Duo-Flex and Toro-Flex Satisloh polishing machines | When switching from Standard tools to Premium Advance tools adjustments of machine must be done.

AVAILABLE CURVES

OEM DESIGN REFERENCES



CURVE 1 = 11-012-001/OEM
CURVE 3 = 11-012-003/OEM
CURVE 5 = 11-012-005/OEM
CURVE 7 = 11-012-007/OEM
CURVE 9 = 11-012-009/OEM
CURVE 11 = 11-012-011/OEM
CURVE 13 = 11-012-013/OEM

ATD DESIGN REFERENCES



CURVE 1 = 11-012-001/ATD
CURVE 3 = 11-012-003/ATD
CURVE 5 = 11-012-005/ATD
CURVE 7 = 11-012-007/ATD
CURVE 9 = 11-012-009/ATD
CURVE 11 = 11-012-011/ATD
CURVE 13 = 11-012-013/ATD

SATISLOH Duo & Toro - Flex Machines

SPEED DT-FLEX

INFO



Technical Data

Diameter: 47 mm | Work range base 0-14 dpt, cyl 0-4 dpt (max. 14 dpt in strongest meridian) | Polyurethane based polish carrier | Innovation clip & place system that allows a longer life time of the plastic part due to its unique structure | Clip & place system is patented.



Benefits

High shape accuracy for all lens surfaces | Eliminates hard lap tools | Cost efficient | Reduces handling, because fewer tools are needed for large working range | Short polish times through high stock removal rates; process times nearly independent of cylinder and/or add powers | Highly versatile: polishes all lens formats (toric, spherical, free-form, convex & concave).



Recommendations

Please use with recommended polishing compound only.



Important Remark

Designed tools for Duo-Flex and Toro-Flex Satisloh polishing machines | When switching from Standard tools to Speed tools adjustments of machine must be done.

AVAILABLE CURVES

OEM DESIGN REFERENCES



CURVE 1 = 11-013-001/OEM
CURVE 3 = 11-013-003/OEM
CURVE 5 = 11-013-005/OEM
CURVE 7 = 11-013-007/OEM
CURVE 9 = 11-013-009/OEM
CURVE 11 = 11-013-011/OEM
CURVE 13 = 11-013-013/OEM

ATD DESIGN REFERENCES



CURVE 1 = 11-013-001/ATD
CURVE 3 = 11-013-003/ATD
CURVE 5 = 11-013-005/ATD
CURVE 7 = 11-013-007/ATD
CURVE 9 = 11-013-009/ATD
CURVE 11 = 11-013-011/ATD
CURVE 13 = 11-013-013/ATD

SATISLOH Multi - Flex Machines

PREMIUM MULTI-FLEX

INFO



Technical Data

Diameter: 55 mm to 90 mm | Work range base 0-14 dpt, cyl 0-6 dpt (max. 14 dpt in strongest meridian) | Polyurethane based polish carrier | Up to 85 lenses / hour | One universal tool curve | Wider process window | Recommended for lenses which will be hard coated later in a 1-Step



Benefits

High shape accuracy for all lens surfaces | Eliminates hard lap tools | Cost efficient | Reduces handling, because fewer tools are needed for large working range | Short polish times through high stock removal rates; process times nearly independent of cylinder and/or add powers | Highly versatile: polishes all lens formats (toric, spherical, free-form, convex & concave).



Recommendations

Please use with recommended polishing compound only.



Important Remark

Designed tools for Multi-Flex Satisloh polishing machines.

REFERENCES



12-011-325

SATISLOH Duo & Toro - Flex Machines

EXTENDED MULTI-FLEX

INFO

→ Technical Data

Diameter: Dow to 48 mm | Work range base 14-18 dpt, cyl 0-6 dpt (max. 14 dpt in strongest meridian) | Polyurethane based polish carrier | Up to 85 lenses / hour | Significantly wider working range | Recommended for lenses which will be hard coated later in a 1-Step process.

→ Benefits

High shape accuracy for all lens surfaces | Eliminates hard lap tools | Cost efficient | Reduces handling, because fewer tools are needed for large working range | Short polish times through high stock removal rates; process times nearly independent of cylinder and/or add powers | Highly versatile: polishes all lens formats (toric, spherical, free-form, convex & concave).

→ Recommendations

Please use with recommended polishing compound only.

→ Important Remark

Designed tools for Multi-Flex Satisloh polishing machines.

AVAILABLE CURVES



12-011-360

SATISLOH Multi - Flex Machines

HIGH LUSTER MULTI-FLEX

INFO

➔ Technical Data

Diameter: 48 mm to 90 mm | Work range base 0-18 dpt, cyl 0-6 dpt (max. 14 dpt in strongest meridian) | Polyurethane based polish carrier | Up to 85 lenses / hour | Use only as a second step in a 2-Step process for a high luster finish.

➔ Benefits

High shape accuracy for all lens surfaces | Eliminates hard lap tools | Cost efficient | Reduces handling, because fewer tools are needed for large working range | Short polish times through high stock removal rates; process times nearly independent of cylinder and/or add powers | Highly versatile: polishes all lens formats (toric, spherical, free-form, convex & concave).

➔ Recommendations

Please use with recommended polishing compound only.

➔ Important Remark

Designed tools for Multi-Flex Satisloh polishing machines.

REFERENCES



12-011-426

SATISLOH Micro - Flex Machines

DLP MICRO-FLEX

INFO



Technical Data

Diameter: 50 mm / 55mm / 70mm | Work range base 0-14 dpt, cyl 0-4 dpt (max. 14 dpt in strongest meridian) | Polyurethane based polish carrier.



Benefits

High shape accuracy for all lens surfaces | Eliminates hard lap tools | Cost efficient | Reduces handling, because fewer tools are needed for large working range | Short polish times through high stock removal rates; process times nearly independent of cylinder and/or add powers | Highly versatile: polishes all lens formats (toric, spherical, free-form, convex & concave).



Recommendations

Please use with recommended polishing compound only.



Important Remark

Designed tools for Micro-Flex Satisloh polishing machines.

REFERENCES



DLP 50mm = 13-011-050
DLP 55mm = 13-011-055
DLP 70mm = 13-011-070

SCHNEIDER CCP Swift, CCP 102, CCP 103 CCP Modulo, CCP Modulo S, CCP Nano and CCP Nano 2 Machines

STANDARD CCP

INFO



Technical Data

Diameter: 45 mm | Work range base 0-14 dpt, (max. 14 dpt in strongest meridian) | Polyurethane based polish carrier.



Benefits

2nd step black topped tool for CR-39, Polycarbonate, Trivex and Hi-index lenses | Designed for maximum output per tool, production proven to last +/- 2,000 seconds with optimum results | More accurate, improved mapping quality | Smoother peak to valley surface quality | Greater stock removal | Excellent resistance to sharp edge lenses.



Recommendations

Please use with recommended polishing compound only.



Important Remark

Designed tools for CCP Swift, CCP 102, CCP 103, CCP Modulo, CCP Modulo S, CCP Nano and CCP Nano 2 polishing machines.

AVAILABLE CURVES

OEM DESIGN REFERENCES



CURVE 032 / YELLOW = 10-010-032/OEM
CURVE 075 / BLUE = 10-010-075/OEM
CURVE 150 / RED = 10-010-150/OEM
CURVE 600 / GREY = 10-010-600/OEM
NEGATIVE CURVES / GREEN
(UPON REQUEST)

ATD DESIGN REFERENCES



CURVE 032 / YELLOW = 10-010-032/ATD
CURVE 075 / BLUE = 10-010-075/ATD
CURVE 150 / RED = 10-010-150/ATD
CURVE 600 / GREY = 10-010-600/ATD
NEGATIVE CURVES / GREEN
(UPON REQUEST)

SCHNEIDER CCP Swift, CCP 102, CCP 103 CCP Modulo, CCP Modulo S, CCP Nano and CCP Nano 2 Machines

PX WMAX CCP

INFO



Technical Data

Diameter: 45 mm | Work range base 0-14 dpt, (max. 14 dpt in strongest meridian) | Polyurethane based polish carrier.



Benefits

Designed for maximum output per tool, production proven to last 4,000-6,000 seconds with optimum results | More accurate, improved mapping quality | Smoother peak to valley surface quality | Greater stock removal | Outstanding surface finish with unrivaled clarity | Sturdy polyurethane withstands breakdown from polish.



Recommendations

Please use with recommended polishing compound only.



Important Remark

Designed tools for CCP Swift, CCP 102, CCP 103, CCP Modulo, CCP Modulo S, CCP Nano and CCP Nano 2 polishing machines.

AVAILABLE CURVES

OEM DESIGN REFERENCES



CURVE 032 / YELLOW = 19-019-032-OEM
CURVE 075 / BLUE = 19-019-075-OEM
CURVE 150 / RED = 19-019-150-OEM
CURVE 600 / GREY = 19-019-600-OEM
NEGATIVE CURVES / GREEN
(UPON REQUEST)

ATD DESIGN REFERENCES



CURVE 032 / YELLOW = 19-019-032-ATD
CURVE 075 / BLUE = 19-019-075-ATD
CURVE 150 / RED = 19-019-150-ATD
CURVE 600 / GREY = 19-019-600-ATD
NEGATIVE CURVES / GREEN
(UPON REQUEST)

SCHNEIDER CCP Swift, CCP 102, CCP 103 CCP Modulo, CCP Modulo S, CCP Nano and CCP Nano 2 Machines

P2 WMAX CCP

INFO



Technical Data

Diameter: 45 mm | Work range base 0-14 dpt, (max. 14 dpt in strongest meridian) | Polyurethane based polish carrier.



Benefits

Designed for maximum output per tool, production proven to last 9,000-12,000 seconds with optimum results | More accurate, improved mapping quality | Smoother peak to valley surface quality | Greater stock removal | Outstanding surface finish with unrivaled clarity | Sturdy polyurethane withstands breakdown from polish.



Recommendations

Please use with recommended polishing compound only.



Important Remark

Designed tools for CCP Swift, CCP 102, CCP 103, CCP Modulo, CCP Modulo S, CCP Nano and CCP Nano 2 polishing machines.

AVAILABLE CURVES

OEM DESIGN REFERENCES



CURVE 032 / YELLOW = 23-023-032-OEM
CURVE 075 / BLUE = 23-023-075-OEM
CURVE 150 / RED = 23-023-150-OEM
CURVE 600 / GREY = 23-023-600-OEM
NEGATIVE CURVES / GREEN
(UPON REQUEST)

ATD DESIGN REFERENCES



CURVE 032 / YELLOW = 23-023-032-ATD
CURVE 075 / BLUE = 23-023-075-ATD
CURVE 150 / RED = 23-023-150-ATD
CURVE 600 / GREY = 23-023-600-ATD
NEGATIVE CURVES / GREEN
(UPON REQUEST)

SCHNEIDER CCP Swift, CCP 102, CCP 103 CCP Modulo, CCP Modulo S, CCP Nano and CCP Nano 2 Machines

PX OMAX CCP

INFO



Technical Data

Diameter: 45 mm | Work range base 0-14 dpt, (max. 14 dpt in strongest meridian) | Polyurethane based polish carrier.



Benefits

Designed for maximum output per tool, production proven to last 4,000-6,000 seconds with optimum results | More accurate, improved mapping quality | Smoother peak to valley surface quality | Greater stock removal | Outstanding surface finish with unrivaled clarity | Sturdy polyurethane withstands breakdown from polish.



Recommendations

Please use with recommended polishing compound only.



Important Remark

Designed tools for CCP Swift, CCP 102, CCP 103, CCP Modulo, CCP Modulo S, CCP Nano and CCP Nano 2 polishing machines.

AVAILABLE CURVES

OEM DESIGN REFERENCES



CURVE 032 / YELLOW = 25-025-032-OEM
CURVE 075 / BLUE = 25-025-075-OEM
CURVE 150 / RED = 25-025-150-OEM
CURVE 600 / GREY = 25-025-600-OEM
NEGATIVE CURVES / GREEN
(UPON REQUEST)

ATD DESIGN REFERENCES



CURVE 032 / YELLOW = 19-025-032-ATD
CURVE 075 / BLUE = 25-025-075-ATD
CURVE 150 / RED = 25-025-150-ATD
CURVE 600 / GREY = 25-025-600-ATD
NEGATIVE CURVES / GREEN
(UPON REQUEST)

SCHNEIDER CCP Swift, CCP 102, CCP 103 CCP Modulo, CCP Modulo S, CCP Nano and CCP Nano 2 Machines

P2 OMAX CCP

INFO



Technical Data

Diameter: 45 mm | Work range base 0-14 dpt, (max. 14 dpt in strongest meridian) | Polyurethane based polish carrier.



Benefits

Designed for maximum output per tool, production proven to last 9,000-12,000 seconds with optimum results | More accurate, improved mapping quality | Smoother peak to valley surface quality | Greater stock removal | Outstanding surface finish with unrivaled clarity | Sturdy polyurethane withstands breakdown from polish.



Recommendations

Please use with recommended polishing compound only.



Important Remark

Designed tools for CCP Swift, CCP 102, CCP 103, CCP Modulo, CCP Modulo S, CCP Nano and CCP Nano 2 polishing machines.

AVAILABLE CURVES

OEM DESIGN REFERENCES



CURVE 032 / YELLOW = 29-029-032-OEM
CURVE 075 / BLUE = 29-029-075-OEM
CURVE 150 / RED = 29-029-150-OEM
CURVE 600 / GREY = 29-029-600-OEM
NEGATIVE CURVES / GREEN
(UPON REQUEST)

ATD DESIGN REFERENCES



CURVE 032 / YELLOW = 29-029-032-ATD
CURVE 075 / BLUE = 29-029-075-ATD
CURVE 150 / RED = 29-029-150-ATD
CURVE 600 / GREY = 29-029-600-ATD
NEGATIVE CURVES / GREEN
(UPON REQUEST)

SCHNEIDER CCP Swift, CCP 102, CCP 103 CCP Modulo, CCP Modulo S, CCP Nano and CCP Nano 2 Machines

WHPU CCP

INFO



Technical Data

Diameter: 45 mm | Work range base 0-14 dpt, (max. 14 dpt in strongest meridian) | Polyurethane based polish carrier.



Benefits

Designed for maximum output per tool, production proven to last 9,000-12,000 seconds with optimum results | More accurate, improved mapping quality | Smoother peak to valley surface quality | Outstanding surface finish with unrivaled clarity | Extremely rigid and comparatively porous PU, it delivers superior flatness and excellent removal rates.



Recommendations

Please use with recommended polishing compound only.



Important Remark

Designed tools for CCP Swift, CCP 102, CCP 103, CCP Modulo, CCP Modulo S, CCP Nano and CCP Nano 2 polishing machines.

AVAILABLE CURVES

OEM DESIGN REFERENCES



CURVE 032 / YELLOW = 33-033-032-OEM
CURVE 075 / BLUE = 33-033-075-OEM
CURVE 150 / RED = 33-033-150-OEM
CURVE 600 / GREY = 33-033-600-OEM
NEGATIVE CURVES / GREEN
(UPON REQUEST)

ATD DESIGN REFERENCES



CURVE 032 / YELLOW = 33-033-032-ATD
CURVE 075 / BLUE = 33-033-075-ATD
CURVE 150 / RED = 33-033-150-ATD
CURVE 600 / GREY = 33-033-600-ATD
NEGATIVE CURVES / GREEN
(UPON REQUEST)

SCHNEIDER CCP Swift, CCP 102, CCP 103 CCP Modulo, CCP Modulo S, CCP Nano and CCP Nano 2 Machines

SPEED CCP

INFO



Technical Data

Diameter: 45 mm | Work range base 0-14 dpt, (max. 14 dpt in strongest meridian) | Polyurethane based polish carrier.



Benefits

Designed for maximum output per tool, production proven to last 9,000-12,000 seconds with optimum results | More accurate, improved mapping quality | Smoother peak to valley surface quality | Outstanding surface finish with unrivaled clarity | Extremely rigid and comparatively porous PU, it delivers superior flatness and excellent removal rates.



Recommendations

Please use with recommended polishing compound only.



Important Remark

Designed tools for CCP Swift, CCP 102, CCP 103, CCP Modulo, CCP Modulo S, CCP Nano and CCP Nano 2 polishing machines.

AVAILABLE CURVES

OEM DESIGN REFERENCES



CURVE 032 / YELLOW = 37-037-032-OEM
CURVE 075 / BLUE = 37-037-075-OEM
CURVE 150 / RED = 37-037-150-OEM
CURVE 600 / GREY = 37-037-600-OEM
NEGATIVE CURVES / GREEN
(UPON REQUEST)

ATD DESIGN REFERENCES



CURVE 032 / YELLOW = 37-037-032-ATD
CURVE 075 / BLUE = 37-037-075-ATD
CURVE 150 / RED = 37-037-150-ATD
CURVE 600 / GREY = 37-037-600-ATD
NEGATIVE CURVES / GREEN
(UPON REQUEST)

OPTOTECH ASP 80, Torilab Store, Easy Twin Machines

STANDARD OPTO SPRING

INFO



Technical Data

Diameter: 50 mm / 56 mm / 60mm / 65 mm | Plano up to 10 dpt. (cylinder -4 dpt.) | Polyurethane based polish carrier.



Benefits

2nd step black topped tool for all lenses materials. | Designed for maximum output per tool, production proven to last up to 100 surfaces/tool | More accurate, improved mapping quality | Smoother peak to valley surface quality | Greater stock removal | Designed for polishing toric, spherical and freeform lenses.



Recommendations

Please use with recommended polishing compound only.



Important Remark

Designed tools for ASP 80, TORILAB STORE, COMBI TWIN CNC and EASY TWIN CNC Optotech polishing machines.

REFERENCES



CURVE 045 = 07-000-5003/BLACK
CURVE 075 = 07-000-5002/YELLOW
CURVE 250 = 07-000-5001/RED
CURVE 1000 = 07-000-5000/BLUE

OPTOTECH ASP 80, Torilab Store, Easy Twin Machines

GRPU GROOVE OPTO SPRING

INFO



Technical Data

Diameter: 50 mm / 56 mm / 60mm / 65 mm | Plano up to 10 dpt. (cylinder -4 dpt.) | Polyurethane based polish carrier.



Benefits

1st step rigid PU topped groove tool for all lenses materials. | Designed for maximum output per tool, production proven to last up to 100 surfaces/tool | More accurate, improved mapping quality | Smoother peak to valley surface quality | Greater stock removal | Designed for polishing toric, spherical and freeform lenses.



Recommendations

Please use with recommended polishing compound only.



Important Remark

Designed tools for ASP 80, TORILAB STORE, COMBI TWIN CNC and EASY TWIN CNC Optotech polishing machines.

REFERENCES



CURVE 045 = 16-000-5003/BLACK
CURVE 075 = 16-000-5002/YELLOW
CURVE 250 = 16-000-5001/RED
CURVE 1000 = 16-000-5000/BLUE

OPTOTECH ASP 80, Torilab Store, Easy Twin Machines

GRPU FLOWER OPTO SPRING

INFO



Technical Data

Diameter: 50 mm / 56 mm / 60mm / 65 mm | Plano up to 10 dpt. (cylinder -4 dpt.) | Polyurethane based polish carrier.



Benefits

1st step rigid PU with topped 6 leaf tool for all lenses materials. | Designed for maximum output per tool, production proven to last up to 100 surfaces/tool | More accurate, improved mapping quality | Smoother peak to valley surface quality | Greater stock removal | Designed for polishing toric, spherical and freeform lenses.



Recommendations

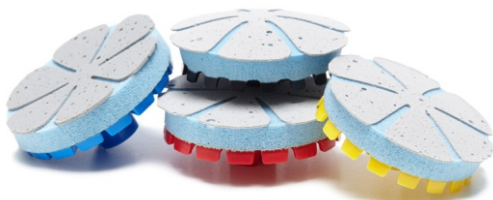
Please use with recommended polishing compound only.



Important Remark

Designed tools for ASP 80, TORILAB STORE, COMBI TWIN CNC and EASY TWIN CNC Optotech polishing machines.

REFERENCES



CURVE 045 = 20-000-5003/BLACK
CURVE 075 = 20-000-5002/YELLOW
CURVE 250 = 20-000-5001/RED
CURVE 1000 = 20-000-5000/BLUE

OPTOTECH ASP 80, Torilab Store, Easy Twin Machines

PREMIUM OPTO SPRING

INFO



Technical Data

Diameter: 50 mm / 56 mm / 60mm / 65 mm | Plano up to 10 dpt. (cylinder -4 dpt.) | Polyurethane based polish carrier.



Benefits

1st step smooth PU topped tool for all lenses materials. | Designed for maximum output per tool, production proven to last up to 100 surfaces/tool | More accurate, improved mapping quality | Smoother peak to valley surface quality | Greater stock removal | Designed for polishing toric, spherical and freeform lenses.



Recommendations

Please use with recommended polishing compound only.



Important Remark

Designed tools for ASP 80, TORILAB STORE, COMBI TWIN CNC and EASY TWIN CNC Optotech polishing machines.

REFERENCES



CURVE 045 = 13-000-5003/BLACK
CURVE 075 = 13-000-5002/YELLOW
CURVE 250 = 13-000-5001/RED
CURVE 1000 = 13-000-5000/BLUE

OPTOTECH FEM RX – Production

STANDARD R45/78 OPTO FEM

INFO



Technical Data

Diameter: 78 mm | Curve: R45 | Polyurethane black PU felt membrane for polishing free form and other lenses in RX-production | Flat-back 2".



Benefits

Special bond design from rubber to top pad for outstanding lifetime of the tool and polishing quality.



Recommendations

Please use with recommended polishing compound only.



Important Remark

Designed tools for Optotech polishing machines.

REFERENCES



21-001-5003/FEM

OPTOTECH FEM RX – Production

GRPU GROOVE R45/78 OPTO FEM

INFO



Technical Data

Diameter: 78 mm | Curve: R45 | Polyurethane rigid PU foil membrane for polishing free form and other lenses in RX-production | Flat-back 2".



Benefits

Special bond design from rubber to top pad for outstanding lifetime of the tool and polishing quality.



Recommendations

Please use with recommended polishing compound only.



Important Remark

Designed tools for Optotech polishing machines.

REFERENCES



21-000-5003/FEM

OPTOTECH FEM RX – Production

LPPU R42/69 OPTO FEM (WITH FLAP)

INFO



Technical Data

Diameter: 69 mm | Curve: R42 | Polyurethane rigid PU foil membrane for polishing free form and other lenses in RX-production | Flat-back 2".



Benefits

Special bond design from rubber to top pad for outstanding lifetime of the tool and polishing quality.



Recommendations

Please use with recommended polishing compound only.



Important Remark

Designed tools for Optotech polishing machines.

REFERENCES



21-000-5002/FEM

OPTOTECH FEM RX – Production

STANDARD R35/55 OPTO FEM

INFO



Technical Data

Diameter: 55 mm | Curve: R35 | Polyurethane black PU felt membrane for polishing free form and other lenses in RX-production | Flat-back 2".



Benefits

Special bond design from rubber to top pad for outstanding lifetime of the tool and polishing quality.



Recommendations

Please use with recommended polishing compound only.



Important Remark

Designed tools for Optotech polishing machines.

REFERENCES



21-001-5001/FEM

OPTOTECH FEM RX – Production

GRPU GROOVE R35/55 OPTO FEM

INFO



Technical Data

Diameter: 55 mm | Curve: R35 | Polyurethane rigid PU foil membrane for polishing free form and other lenses in RX-production | Flat-back 2".



Benefits

Special bond design from rubber to top pad for outstanding lifetime of the tool and polishing quality.



Recommendations

Please use with recommended polishing compound only.



Important Remark

Designed tools for Optotech polishing machines.

REFERENCES



21-000-5001/FEM

OPTOTECH FEM RX – Production

STANDARD R100/83 OPTO FEM

INFO

➔ Technical Data

Diameter: 83 mm | Curve: R100 | Polyurethane black PU felt membrane for polishing free form and other lenses in RX-production | Flat-back 2".

➔ Benefits

Special bond design from rubber to top pad for outstanding lifetime of the tool and polishing quality.

➔ Recommendations

Please use with recommended polishing compound only.

➔ Important Remark

Designed tools for Optotech polishing machines.

REFERENCES



21-001-5001/FEM

OPTOTECH FEM RX – Production

GRPU GROOVE R100/83 OPTO FEM

INFO



Technical Data

Diameter: 83 mm | Curve: R100 | Polyurethane rigid PU foil membrane for polishing free form and other lenses in RX-production | Flat-back 2".



Benefits

Special bond design from rubber to top pad for outstanding lifetime of the tool and polishing quality.



Recommendations

Please use with recommended polishing compound only.



Important Remark

Designed tools for Optotech polishing machines.

REFERENCES



21-000-5001/FEM

OPTOTECH ASP 80 Twin - A Machines

STANDARD R38/50 OPTO HYBRID

INFO



Technical Data

Diameter: 50 mm | Curve: R38 | Polyurethane black PU felt rubber membrane with technical shock absorber foam which adapts to the topography of the lens surface.



Benefits

Increased tool lifetime of our Hybrid Polishing Technology (HPT) tools while producing high value products | Low operating costs thanks to the long life time of the HPT tools | Consistent, reproducible surface quality | All materials can be processed with the same tools | High process reliability.



Recommendations

Please use with recommended polishing compound only.



Important Remark

Designed tools for ASP 80 Twin-A Optotech machines.

REFERENCES



17-2173

OPTOTECH ASP 80 Twin - A Machines

GRPU R38/50 OPTO HYBRID

INFO

→ Technical Data

Diameter: 50 mm | Curve: R38 | Polyurethane rigid PU foil rubber membrane with technical shock absorber foam which adapts to the topography of the lens surface.

→ Benefits

Increased tool lifetime of our Hybrid Polishing Technology (HPT) tools while producing high value products | Low operating costs thanks to the long life time of the HPT tools | Consistent, reproducible surface quality | All materials can be processed with the same tools | High process reliability.

→ Recommendations

Please use with recommended polishing compound only.

→ Important Remark

Designed tools for ASP 80 Twin-A Optotech machines.

REFERENCES



17-2173/1

OPTOTECH ASP 80 Twin - A Machines

GRPU R45/61 OPTO HYBRID

INFO



Technical Data

Diameter: 61 mm | Curve: R45 | Polyurethane rigid PU foil rubber membrane with technical shock absorber foam which adapts to the topography of the lens surface.



Benefits

Increased tool lifetime of our Hybrid Polishing Technology (HPT) tools while producing high value products | Low operating costs thanks to the long life time of the HPT tools | Consistent, reproducible surface quality | All materials can be processed with the same tools | High process reliability.



Recommendations

Please use with recommended polishing compound only.



Important Remark

Designed tools for ASP 80 Twin-A Optotech machines.

REFERENCES



17-2174/1

OEM Machines

OEM EXCLUSIVE TOOLS

INFO



Technical Data

Confidential Information.



Benefits

Confidential Information.



Recommendations

Confidential Information.



Important Remark

Our company is the OEM (Original Equipment Manufacturer) of well recognized companies in the optical market. Our policy of exclusivity and confidentiality agreements with our partners allows us to put at their disposal all our know-how in the development of new products, without ever compromising the relationship of trust, since all the products and innovations created in the scope of exclusive partnership are not allowed to be used in other products or/and to be sold by our company to third parties.

REFERENCES



For details and purchase issues please contact:

COBURN TECHNOLOGIES INC (USA)

83 Gerber Road West
South Windsor, CT 06074
www.coburntechnologies.com

COMES SRL (ITALY)

20025 Legnano (MI) - Via Veneto 6
www.comes.it



SPARE PARTS

Digital Job Trays

LOH/SCHNEIDER SYSTEM

INFO



Technical Data

Carrier base measures 210mm (8.267") x 250mm (9.843") x 12mm (.472") | Overall tray height is 69.85mm (2.75").



Benefits

Heavy duty, stackable job trays that are compatible with all digital optical lens processing equipment. | Its designed to be used with the 2 or 3 slot LOH/SCHNEIDER blockings. | Are available in 7 different colors.



Recommendations

Please use with recommended blocking system and machines.



Important Remark

Due to a special locating device, the tray holds blocking chucks, blocked lenses ready for the finishing process and lenses that have not been blocked yet.

REFERENCES

LOH/SCHNEIDER SYSTEM – 2 SLOTS



WHITE = 50-002-000/0140-02
ORANGE = 50-002-021/0140-02
RED = 50-002-032/0140-02
GREY = 50-002-009/0140-02
BLUE = 50-002-300/0140-02
GREEN = 50-002-356/0140-02
YELLOW = 50-002-102/0140-02

**FURTHER JOB TRAYS
AVAILABLE ON REQUEST**

LOH/SCHNEIDER SYSTEM – 3 SLOTS



WHITE = 50-003-000/0140-08
ORANGE = 50-003-021/0140-08
RED = 50-003-032/0140-08
GREY = 50-003-009/0140-08
BLUE = 50-003-300/0104-08
GREEN = 50-003-356/0140-08
YELLOW = 50-003-102/0140-08

**FURTHER JOB TRAYS
AVAILABLE ON REQUEST**

Digital Job Trays

WECO/NIDEK SYSTEM

INFO



Technical Data

Carrier base measures 210mm (8.267") x 250mm (9.843") x 12mm (.472") | Overall tray height is 69.85mm (2.75").



Benefits

Heavy duty, stackable job trays that are compatible with all digital optical lens processing equipment. | Its designed to be used with the 2 or 3 slot WECO/NIDEK blockings. | Are available in 7 different colors.



Recommendations

Please use with recommended blocking system and machines.



Important Remark

Due to a special locating device, the tray holds blocking chucks, blocked lenses ready for the finishing process and lenses that have not been blocked yet.

REFERENCES

WECO/NIDEK SYSTEM – 2 SLOTS



WHITE = 50-002-000/0140-06
ORANGE = 50-002-021/0140-06
RED = 50-002-032/0140-06
GREY = 50-002-009/0140-06
BLUE = 50-002-300/0140-06
GREEN = 50-002-356/0140-06
YELLOW = 50-002-102/0140-06

**FURTHER JOB TRAYS
AVAILABLE ON REQUEST**

WECO/NIDEK SYSTEM – 3 SLOTS



WHITE = 50-003-000/0140-07
ORANGE = 50-003-021/0140-07
RED = 50-003-032/0140-07
GREY = 50-003-009/0140-07
BLUE = 50-003-300/0104-07
GREEN = 50-003-356/0140-07
YELLOW = 50-003-102/0140-07

**FURTHER JOB TRAYS
AVAILABLE ON REQUEST**

Digital Job Trays

OEM EXCLUSIVE JOB TRAYS

INFO



Technical Data

Confidential Information.



Benefits

Confidential Information.



Recommendations

Confidential Information.



Important Remark

Our company is the OEM (Original Equipment Manufacturer) of well recognized companies in the optical market. Our policy of exclusivity and confidentiality agreements with our partners allows us to put at their disposal all our know-how in the development of new products, without ever compromising the relationship of trust, since all the products and innovations created in the scope of exclusive partnership are not allowed to be used in other products or/and to be sold by our company to third parties.

REFERENCES



For details and purchase issues please contact:

MEI SRL (ITALY)

Via Ing. G. Caproni, 50
24036 Ponte San Pietro (BG)
www.meisystem.com

COMES SRL (ITALY)

20025 Legnano (MI) - Via Veneto 6
www.comes.it

Metal Spare Parts

LOH/SCHNEIDER BLOCKINGS

INFO



Technical Data

For blocking all kind of lenses including axis notch for recognizing free form lens axis. | Ø47mmx50mmx10mm.



Benefits

Machined from solid aluminum bar stock to exacting tolerances | All blocks are anodized | 2 standard colors available in 2 or 3 slot version.



Recommendations

Designed to have great behavior with our job trays LOH/SCHNEIDER system.

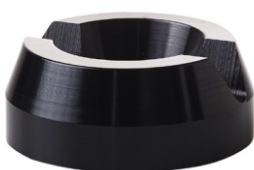


Important Remark

Spare part for LOH/SCHNEIDER machines use only.

REFERENCES

LOH/SCHNEIDER SYSTEM – 2 SLOTS



BLACK = 60-002-000
RED = 60-002-032
FURTHER BLOCKINGS
AVAILABLE ON REQUEST

LOH/SCHNEIDER SYSTEM – 3 SLOTS



BLACK = 60-003-000
RED = 60-003-032
FURTHER BLOCKINGS
AVAILABLE ON REQUEST

Metal Spare Parts

D/T MACHINE METAL TOOL POST

INFO



Technical Data

Metal polishing tool support for Satisloh Duo and Toro flex machines.



Benefits

Quality replacement OEM part | Specific designed metal support has superior lifetime | Centering cross line eliminate misalignment of the tool and substantially reduce optical lens rejects.



Recommendations

Designed to have outstanding behavior with our polishing tools clip & place system.



Important Remark

Designed spare part for Duo-Flex and Toro-Flex Satisloh polishing machines use only.

REFERENCES



60-004-000

Metal Spare Parts

D/T MACHINE METAL BALL PIN

INFO



Technical Data



Benefits



Recommendations



Important Remark

REFERENCES



60-004-000

Rubber Spare Parts

CCP RUBBER CARDAN

INFO



Technical Data

Rubber Cardan for Schneider CCP 102, CCP 103 and CCP Swift digital lens polisher machines.



Benefits

Rubber resistant to abrasion, liquids and polishing oxides used in the polishing process of the lenses | Quality replacement OEM part.



Recommendations

Designed to have great behavior with our CCP polishing tools.



Important Remark

Spare part for CCP SCHNEIDER machines use only.

REFERENCES



BLACK = 30-010-001

Rubber Spare Parts

DT RUBBER BELLOW

INFO



Technical Data

Rubber bellow for Satisloh Duo and Toro flex machines.



Benefits

Rubber resistant to abrasion, liquids and polishing oxides used in the polishing process of the lenses | Quality replacement OEM part.



Recommendations

Designed to have great behavior with our DT-FLEX polishing tools and DT TOOL POST.



Important Remark

Spare part for DUO & TORO SATISLOH machines use only.

REFERENCES



BLACK = 30-010-006

Rubber Spare Parts

RUBBER SUCTION CUP

INFO



Technical Data

Rubber suction cup for Satisloh, Schneider and Optotech machines.



Benefits

Rubber resistant to abrasion, liquids and polishing oxides used in the polishing process of the lenses | Quality replacement OEM part.



Recommendations

Designed to have great behavior in all type of lenses due to the extra range suction lip.



Important Remark

Spare part for Satisloh, Schneider and Optotech machines only.

REFERENCES



BLACK = 30-010-000

Rubber Spare Parts

RUBBER JOB TRAY LENS SUPPORT

INFO



Technical Data

For shock absorption of all kind of lenses when located in the job trays | Ø90mm | To use with all digital optical lens processing job tray.



Benefits

Prevents damages and risks inherent to the normal manipulation of the lenses during the production process

REFERENCES



BLACK = 30-010-002

Plastic Spare Parts

D/T MACHINE PLASTIC TOOL POST

INFO



Technical Data

Plastic polishing tool support for Satisloh Duo and Toro flex machines.



Benefits

Quality replacement OEM part | Specific designed plastic support has an excellent lifetime, so the costs will be extraordinary low | Centering cross line eliminate misalignment of the tool and substantially reduce optical lens rejects.



Recommendations

Designed to have outstanding behavior with our polishing tools clip & place system.



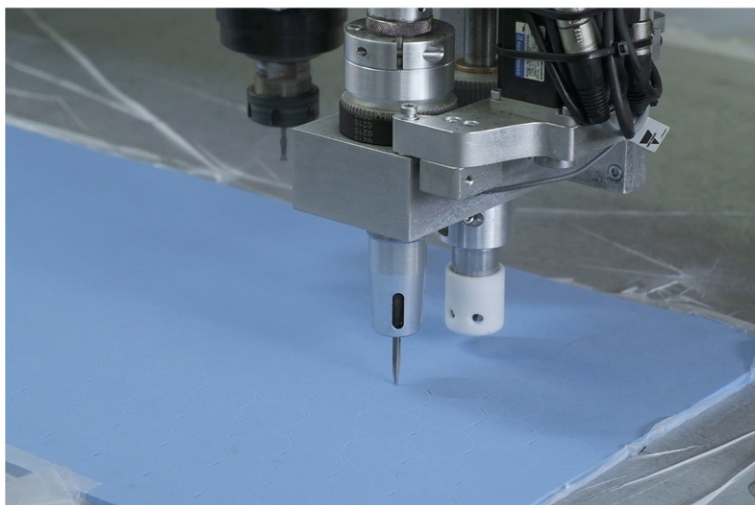
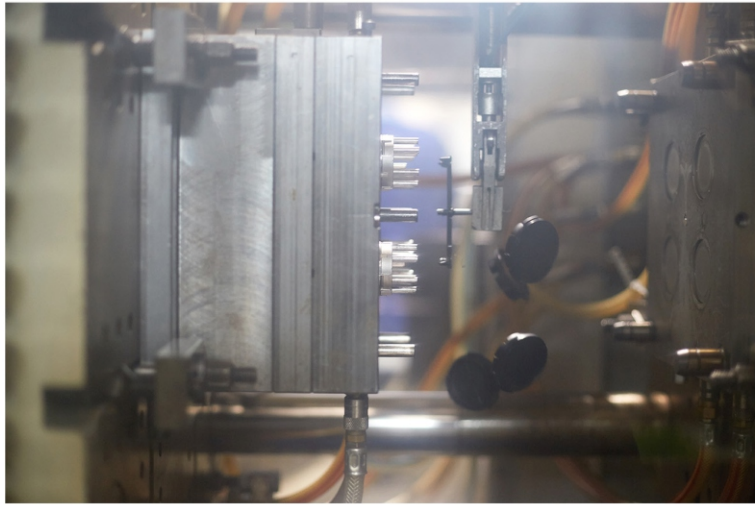
Important Remark

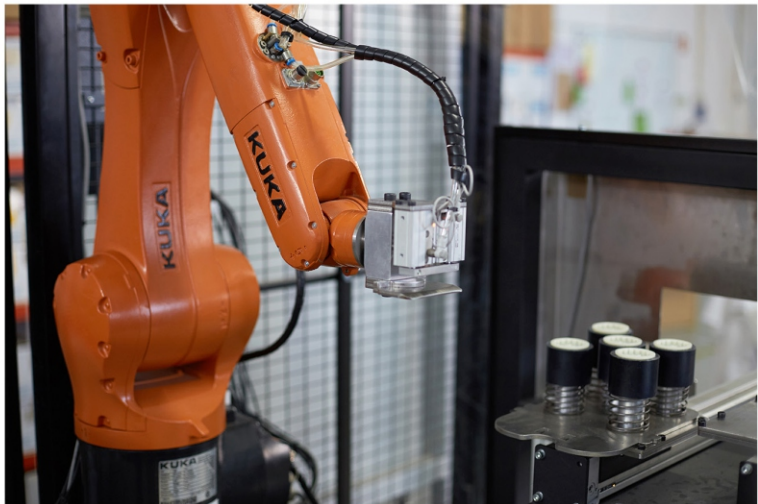
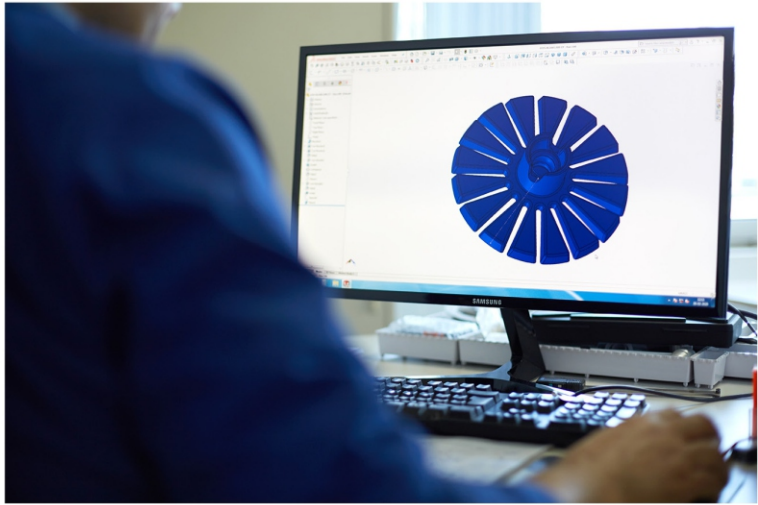
Designed spare part for Duo-Flex and Toro-Flex Satisloh polishing machines use only.

REFERENCES



BLACK = 80-000-000







KNETIK
INNOVATING THE FUTURE



On-line

info@knetik.org
www.knetik.com.pt



Phone

+ 351 252 323 374



Address

Rua Amélia Rey Colaço, N. 188
4760-174 Vila Nova de Famalicão
Portugal

Digital Lens Processing Catalog

NORTE2020
Programa Operacional Regional do Norte

PORTUGAL
2020

 **UNIÃO EUROPEIA**
FINANÇIADA PELO FUNDOS EUROPEUS DE DESENVOLVIMENTO REGIONAL